

Commercial Vehicle Enforcement Unit

NORTHEAST SECTOR:

Details:

- 03/21, Bradford Rest Area, I 91 South. Four Inspectors screened 135 vehicles. Fourteen inspections were completed. Six vehicle (two out of service) and two driver violations were discovered.
- 02/23, Coventry Rest Area, I 91 North. Three Inspectors screened 122 vehicles. Fifteen inspections were completed. Eleven vehicle (one out of service) and three driver violations were discovered.

Crashes:

- 03/25, Thetford, I 91 North. Inspector Jacobs responded to a single CMV crash. The CMV, an unladen milk tanker tractor trailer, was heading north when it went off the left side of the roadway. The CMV struck several mile marker signs, one of which punctured the fuel tank. A Level 2 inspection was completed. The CMV was towed from the scene. There were no reported injuries.



Notables:

- 03/20 Inspector Hailey with K9 Annie AND Inspector Jacobs with K9 Jonah attended monthly canine in-service training at the Vermont Police Academy.
- 03/20 Bethel, Vt Rte 107. An Inspector stopped a CMV for an inoperable turn signal. An Inspection was completed and the CMV was placed out of service.

- 03/22 Sector Inspectors attended annual MCSAP recertification training at the VTTC. Topics covered included hazardous materials, CVSA out of service criteria update, and prohibited violation masking. \
- 03/23 Wells River, US Rte 5. An Inspector focusing on US DOT registration violations for smaller interstate CMVs stopped a Massachusetts based motor carrier for improper markings. The carrier was properly registered with US DOT. The driver was provided guidance on proper markings per the CFRs.
- 03/23 Wells River, US Rte 5. An Inspector stopped a CMV for an inoperable turn signal. An Inspection was completed and the CMV was placed out of service.
- 03/24 Barre, VT Rte 62. An Inspector conducting a Level 2 inspection placed a trailer out of service for a flat tire- less than 50% as marked on the sidewall.
- 03/24 Barre, VT Rte 63. An Inspector conducting a Level 2 inspection discovered a defective suspension- cracked leaf spring. The CMV was not placed out of service as the violation did not meet the criteria.



- 03/24 Barre, VT Rte 62. An Inspector conducting a Level 2 inspection placed a trailer out of service for a defective air brake hose at the glad hand connection not at a proper connection.



- 03/24 Barre, VT Rte 62. An Inspector conducting a Level 2 inspection placed a trailer out of service for a cracked suspension positioning part.



NORTHWEST SECTOR:

Details:

- 3/23 Williston Rest Area, I 89 South, 5 Inspector screened 236 vehicles. They completed 24 inspections which resulted in 22 vehicle and 9 driver violations. Four vehicles and one driver were placed out of service.

Crashes:

None to report

Notables:

- 3/21 Cpl. Morris stopped a truck hauling a trailer in Alburgh for an equipment violation. An inspection was conducted and the combination was placed out of service for an inoperable emergency breakaway device.



- 3/23 inspected a straight truck at the Williston detail. The inspection revealed building materials were secured improperly on the truck. The vehicle was placed out of service until the driver added necessary strapping.



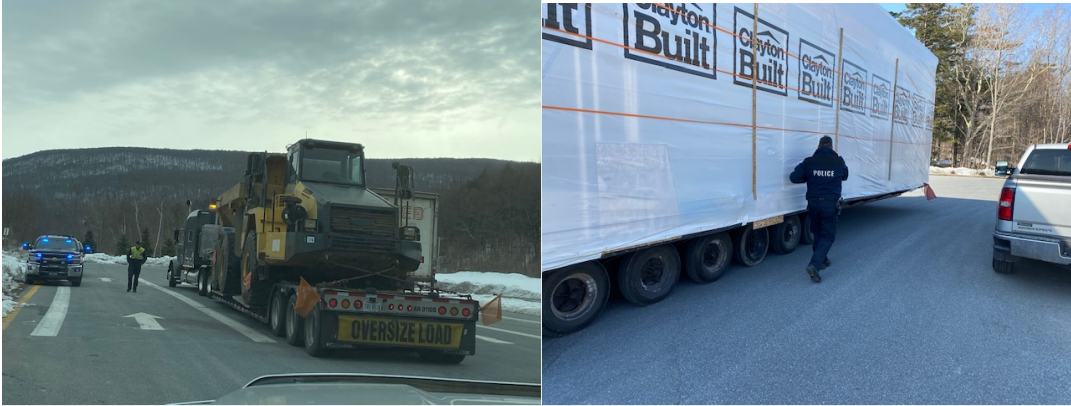
- 3/23 inspected a combination vehicle at the Williston detail. The inspection revealed a rearmost turn signal was inoperable on the trailer. The trailer was placed out of service until the defect was repaired.



SOUTH SECTOR:

Details:

- 3/21, Bennington Chain up Area; 3 Inspectors screened 79 commercial vehicles. They completed 1 Level 1 inspection, 5 Level 2 inspections and 2 Level 3 inspection resulting in 6 vehicle violations 2 Driver Violations, 3 vehicles and 1 Driver were placed OOS.



- 3/23, White River South Bound Rest Area; 4 Inspectors screened 238 commercial vehicles. They completed 2 Level 1 inspections, 5 Level 2 inspections and 3 Level 3 inspection resulting in 19 vehicle violations 2 Driver Violations, 3 vehicles were placed OOS.

Notables:

- 3/21, inspected a 2-axle box truck and found the driver with no medical certificate (w/ no prior history). The driver was given a warning for the violation.
- 3/21, placed an oversized load transporting a mobile home OOS for a flat tire on axle 6. Additionally, a bearing cap was missing on axle 7 allowing an open view of the roller bearings inside the hub. The tire and bearing cap were replaced roadside by the driver.



- 3/21, inspected an oversized load transporting a precast cement bridge section to Massachusetts. A flat tire was discovered on axle 3, which was measured to be 32psi and noticeable by kicking the tire. The vehicle was placed OOS for the flat but inflated roadside using an air hose provided by the inspector.
- 3/21, inspected an interstate combination vehicle exceeding 26,001 lbs. The driver possessed a Class B CDL when an A was required. Additionally, the trailer emergency breakaway device was connected to the trailers safety chain and the vehicle was not equipped with a fire extinguisher and safety (hazard) triangles. The driver was placed OOS for not possessing the required Class A CDL and the vehicle placed OOS while in combination for the emergency breakaway device or until corrected.



- 3/23, inspected an interstate combination and discovered a slack adjuster was disconnected rendering the brake inoperable. In addition to the inoperable brake, four other brakes were out of adjustment for a total of 50% defective brakes. It was also discovered that an adjustable sliding axle pin was not engaged on the trailer having only two. The truck and trailer were placed OOS for the disconnected slack adjuster, greater than 20% defective brakes and the disengaged sliding axle pin.

