

Commercial Vehicle Enforcement

NORTHEAST SECTOR:

Details:

03/19 I-91 Barton Rest Area, 3 Inspectors screened 90 vehicles. 22 inspections were completed which resulted in 13 vehicle violations (2 out of service) and 6 driver violations.

Notables:

03/18 St. Johnsbury, An Inspector conducted a traffic stop on a 3-axle dump truck for a size and weight inspection. A portable weigh was completed, and the dump truck was found to weigh 7,300 pounds overweight. A ticket was issued to the carrier.



03/19 Barton NB Rest Area, An Inspector placed a commercial motor vehicle out of service for an insufficient number of tie-downs to prevent forward movement of cargo not blocked or braced. The cargo was only secured by one tiedown when required to be secured by two.



03/19 Barton NB Rest Area, An Inspector placed a commercial motor vehicle out of service for a tire with 50% or less of the maximum inflation pressure marked on the tire sidewall with an audible air leak.



03/20 Wells River, An Inspector stopped a commercial motor vehicle loaded with logs for a size and weight inspection. A portable weigh was completed, and the commercial motor vehicle was found to weigh 21,500 lbs over its permitted weight. A ticket was issued to the carrier and forced to offload the commodity to comply with weight regulations.



03/21 Orleans, An Inspector conducted a traffic stop on a commercial motor vehicle with inoperable taillights when required. An inspection was conducted, and it was discovered the operator did not possess a Class A commercial driver's license as required, the breakaway was not attached to the power unit, the parking brake was inoperable, and the left turn signal on the rearmost vehicle was inoperable. The operator and vehicle were placed out of service.

03/21 Coventry, An Inspector conducted an inspection on a commercial motor vehicle and discovered the operator was in violation of restrictions: corrective lenses. The operator was placed out of service until he corrected.

03/21 Newport, An Inspector conducted an inspection on a commercial motor vehicle and discovered there was no low-pressure air warning device. The vehicle was placed out of service.

NORTHWEST SECTOR:

Details:

03/19 – 5 Inspectors screened 262 commercial motor vehicles at I-89 Colchester NB weigh station: 21 inspections were conducted, 23 violations detected (3 driver and 20 vehicle), and 1 driver and 2 vehicles were placed out of service.

03/21 – 4 Inspectors screened 77 commercial motor vehicles at I-89 Highate port of entry detail: 26 inspections were conducted, 12 violations detected (2 driver and 10 vehicle), and 1 vehicle was placed out of service.

03/21 – 2 Inspectors screened 41 commercial motor vehicles at US Rte 7 SB Clarendon rest area: 10 inspections were conducted, 8 vehicle violations were detected, and 1 vehicle was placed out of service.

Notables:

03/18 – An Inspector conducted a traffic stop on commercial motor vehicle for speed on VT Rte 22A in Orwell. The operator was placed out of service for 10 consecutive hours for no record of duty status.



03/18 – Inspectors conducted a traffic stop on a commercial motor vehicle on VT Rte 62 in Berlin for a marking violation. An inspection and portable weigh were conducted, and the

combination was discovered to be over their legal tare. The operator was educated and issued a warning.



03/18 – An Inspector conducted a traffic stop on a commercial motor vehicle hauling a piece of machinery on I-89 in Williamstown for an equipment violation. An inspection and portable weigh were conducted, and it was discovered the combination was overweight. The operator was educated and issued a warning.



03/19 – An Inspector conducted a traffic stop on a commercial motor vehicle for failing to stop at the open Colchester Weigh Station detail on I-89 in Colchester. An inspection was completed, and the trailer was placed out of service due to the breakaway not attached to the power unit. There were also loose parts of the transported vehicle on the trailer not secured from falling onto the highway.



03/19 – An Inspector conducted an inspection on a commercial motor vehicle at the I-89 Colchester Weigh Station detail. The inspection revealed the operator did not have an ELD when required. The operator was placed out of service.



03/19 – An Inspector conducted an inspection on a commercial motor vehicle at the I-89 Colchester Weigh Station detail. The inspection revealed a tire was severely deflated on the trailer and placed out of service for the violation.



03/20 – An Inspector conducted a traffic stop on commercial motor vehicle for speed on VT Rte 22A in Orwell. An inspection was conducted, and the trailer was placed out of service as axle 4 passenger side hub assembly cap was missing offering an open view into the hub assembly.

03/20 – An Inspector conducted a traffic stop on a commercial motor vehicle on VT Rte 2A in Williston for an equipment violation. An inspection was conducted, and the investigation determined the operator did not possess a Class A commercial driver's license when required. Additionally, the truck's parking brake was inoperable, the trailer had an inoperable rearmost turn signal, and the emergency breakaway device was defective. The operator, truck, and trailer were placed out of service and the carrier was ticketed.



03/20 – An Inspector conducted a traffic stop on commercial motor vehicle for speed on VT Rte 22A in Orwell. An inspection was conducted, and the operator was placed out of service for having a "K" (intrastate only) restriction on his Pennsylvania Commercial driver's license.



03/20 – An Inspector instructed Motor Vehicle Law to the Vermont Part-time Police Academy class in Pittsford.

03/21 – An Inspector conducted a traffic stop on a commercial motor vehicle on VT Rte 22A in Orwell for inoperable tail lamps on the rearmost part of the vehicle while lights were required. An inspection was conducted, and the trailer was placed out of service.



03/21 – An Inspector conducted an inspection on a commercial motor vehicle at the US Rte 7 Clarendon Rest Area detail. The inspection revealed 20% or more of the service brakes were inoperable, placing the commercial motor vehicle out of service.



03/21 – An Inspector conducted an inspection on a commercial motor vehicle at the I-89 Highgate Port of Entry detail. An inspection and a portable weigh were conducted, and the vehicle was placed out of service for a defective breakaway. Also, the vehicle was hauling plastic tubing and was found to be 14,800 lbs. over its registered weight. A ticket was issued to the carrier.



COMMERCIAL VEHICLE ENFORCEMENT

SOUTH SECTOR:

Details:

03/19 Putney Weigh Station, 5 inspectors screened 148 vehicles resulting in 22 inspections. There were 5 driver violations and 12 vehicle violations (1 out of service). One ticket was issued for an overweight violation.

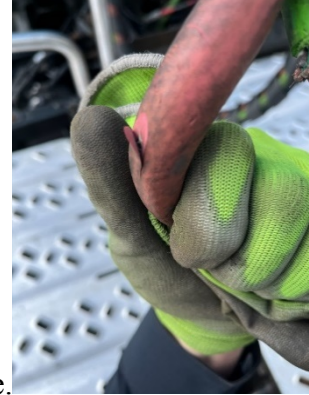
03/21 VT Rte 9 Bennington Chain Up, 5 inspectors screened 85 vehicles resulting in 16 inspections. There were 2 driver violations and 3 vehicle violations.

Notables:

03/18 An Inspector conducted a traffic stop on US Rte 7 in Shaftsbury on a commercial motor vehicle. An inspection and portable weigh were conducted, and the vehicle was found to be 11,500 lbs. over its registered weight. A ticket was issued to the carrier.



03/19 An Inspector conducted an inspection on a commercial motor vehicle and discovered a flat tire, chafed/cut air hoses, and light violations. Although the air hose and light violations did not meet the out of service criteria, the trailer was placed out of service for the flat tire. The Inspector



assisted the operator in inflating the tire, so the operator could continue.



03/19 An Inspector conducted a size and weight inspection on a commercial motor vehicle and discovered the vehicle to be 6,640 lbs. over its permitted weight. A ticket was issued to the carrier.

03/21 An Inspector conducted a traffic stop on a commercial motor vehicle for failing to stop at the fixed site inspection in Bennington. An inspection was completed, and it was discovered the carrier was under a federal out of service order and currently operating in interstate commerce, the vehicle had one of four brakes out of adjustment, and the cargo was unsecured. The vehicle was escorted to the rest area and placed out of service.



03/21 An Inspector conducted a traffic stop on a commercial motor vehicle on US Rte 7 in Shaftsbury for a marking violation. An inspection was completed, and it was discovered the operator had no logs or corrective lenses as required. It was also discovered the vehicle had a flat tire. Both the operator and vehicle were placed out of service.

