

Commercial Vehicle Enforcement

NORTHEAST SECTOR:

Details:

- 05/23, Waterford I 93 North. Three Inspectors screened 110 vehicles. Twelve inspections were completed. Eight vehicle violations (one out of service) and five driver violations were discovered.
- 05/25, Ryegate I 91 North. Five Inspectors screened 134 vehicles. Twenty- one inspections were completed. Thirty-four vehicle (four out of service) and seven driver (four out of service) violations were discovered.

Crashes:

- None reported.

Notables:

- 05/22, Stowe, Vt Rte 100. An Inspector stopped a CMV for a load securement violation. A Level 2 inspection and the CMV was placed out of service for improper load securement- two straps required on front tier not blocked or braced to the front.



- 05/22 Coventry. An Inspector placed a CMV out of service for defective low air warning device and independent movement between the steering gear box output shaft and the pitman arm.



- 05/23 Waterford detail. An Inspector stopped a CMV for failure to stop for inspection. The CMV was placed out of service for improper load securement- two strap required on front tier when not blocked or braced.
- 05/23-05/24 Inspector Hailey with K9 Annie and Inspector Jacobs with K9 Jonah attended monthly in-service training at the Vermont Police Academy.



- 05/24 Royalton, VT Rte 107. An Inspector conducting an inspection discovered a suspended CDL driver. A level 3 inspection was completed. In addition, the operator did not have a valid medical card. The driver was placed out of service.
- 05/25, Ryegate detail. An Inspector grounded a CMV after discovering that the carrier was under suspension in Vermont. An inspection was completed and the carrier was able to clear the suspension.



- 05/25 Ryegate detail. An inspector stopped a CMV that failed to stop for inspection. The carrier was not registered with US DOT. The CMV was placed out of service for no operable brakes on the trailer and an exposed hub.



- 05/25 Ryegate detail. An Inspector stopped a CMV that failed to stop for inspection. An inspection was completed and the driver was placed out of service for no CDL when required.
- 05/26 Dummerston, I 91. An Inspector inspected a CMV and placed it out of service for a flat tire.



SOUTH SECTOR:

Details:

- 5/2, Randolph, I 89 NB; 6 Inspectors screened 220 vehicles and completed 17 inspections, resulting in 22 vehicle violations and one driver violation; a total of 7 vehicles were placed Out of Service. Additionally, Inspectors verified 7 platform scale weighs and 6 oversized permits.
- 5/4, Emerald Lake, US Rte. 7 South; 3 Inspectors screened 60 vehicles and completed 14 inspections, resulting in 13 vehicle violations and 3 driver violations; 4 vehicles and one driver were placed Out of Service.

Notables:

- 5/21, Inspector stopped a Tractor-Trailer unit for speeding on Route 22a in Shoreham. The operator had a 30-minute rest violation and an 11-hour drive time violation on previous days. The front left turn signal was also inoperable. One of the sliding tandems pins was not fully engaged. All of these were documented as violations but did not meet the out of service criteria.



- 5/23, at the Randolph Detail, Inspector performed a level 1 inspection on a straight truck that had no DOT or Carrier markings. The operator also had an expired medical card and had a previous violation for this, putting the driver out of service.



- 5/23, Inspector conducted a Level 1 inspection of a straight truck at a detail in Randolph. It was discovered the rear axle had mismatched brake canisters. Although a violation, it did not meet the out of service criteria.



- 5/23, at the Randolph Detail, Inspector completed a level 2 inspection on a tractor trailer. The airlines from truck to trailer were frayed into the reinforcement ply, placing the unit out of service in combination. The trailer had no DOT approved splices in the brake lines, placing the trailer out of service.



- 5/23, Inspector discovered inoperable brake lights on the rear of a tractor trailer combination. The vehicle was placed out of service and repaired on site.
- 5/23, Cpl. discovered an underinflated tire on a 5-axle interstate combination; the tire measured 40 psi. The trailer was placed OOS; however, the driver inflated the tire roadside and continued transport.
- 5/23, Inspector located 2 loose adjacent wheel fasteners during an inspection at the Randolph NB rest area. The CMV was placed out of service and repaired on site.



- 5/23, at the Randolph Detail, Inspector completed a level 2 inspection on a tractor trailer. A flat tire was found on the tractor, measuring at 15 PSI. The truck was out of service.



- 5/23, at the Randolph detail, Inspector completed a level 2 inspection on a tractor-trailer. The airlines from the truck to trailer were found to be frayed in the reinforcement ply. The vehicle was placed out of service in combination.



- 5/23, Cpl. inspected a 4-axle straight truck/trailer combination and discovered a shredded tire lodged between the axle and frame of the trailer.





- 5/23, Inspector discovered a cracked brake lining during an inspection at the Randolph NB rest area.



- 5/23 at the Randolph detail, Inspector completed a level 2 inspection on a log truck. The trailer pulled into the detail with no operative brake lights. The trailer was placed out of service, but the driver was able to repair the violation on scene.



- 5/24, at the Bridgewater Eastbound detail, a tractor-trailer traveling westbound passed a passenger car in front of Inspectors while they were completing inspections. The TT unit nearly ran the passenger car off the road and passed in an area with an unsafe curve. Inspector caught up to the CMV in Killington. A Level 3 inspection was completed, and the operator was given a VCVC for limitations on passing and a violation was documented for unsafe passing.

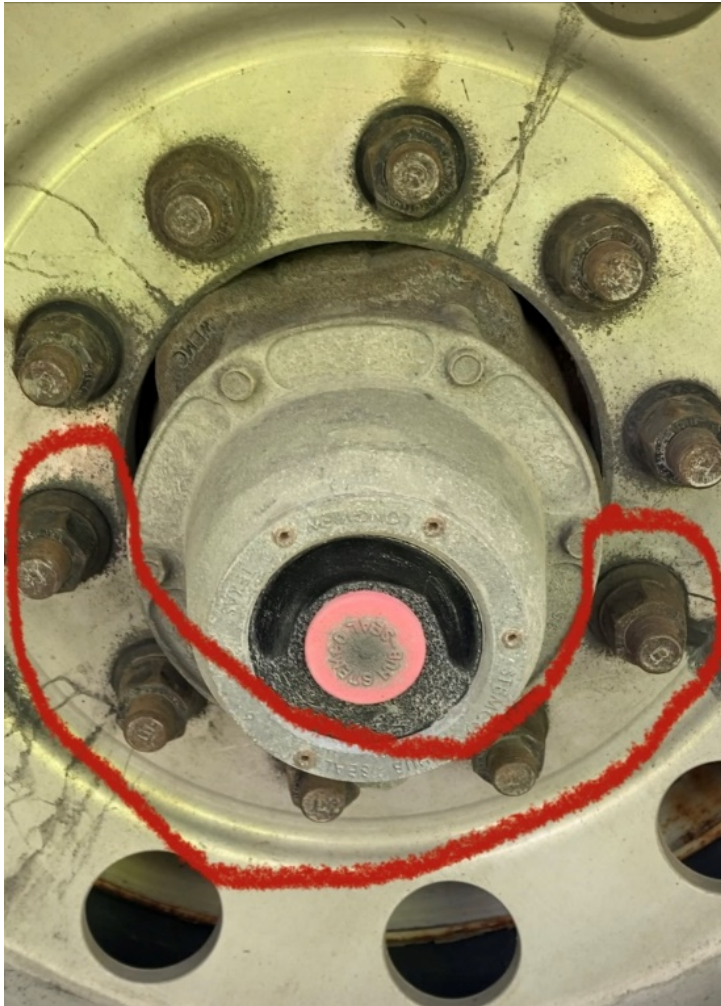


- 5/24, Inspector discovered inoperable brake lights on the rear of a tractor trailer combination. The trailer was placed out of service and repaired on site.



- 5/25, Cpl. discovered loose wheel fasteners and an underinflated tire on a trailer tag axle in use at the time of inspection; the tire measured 49 psi and was less than 50% of the

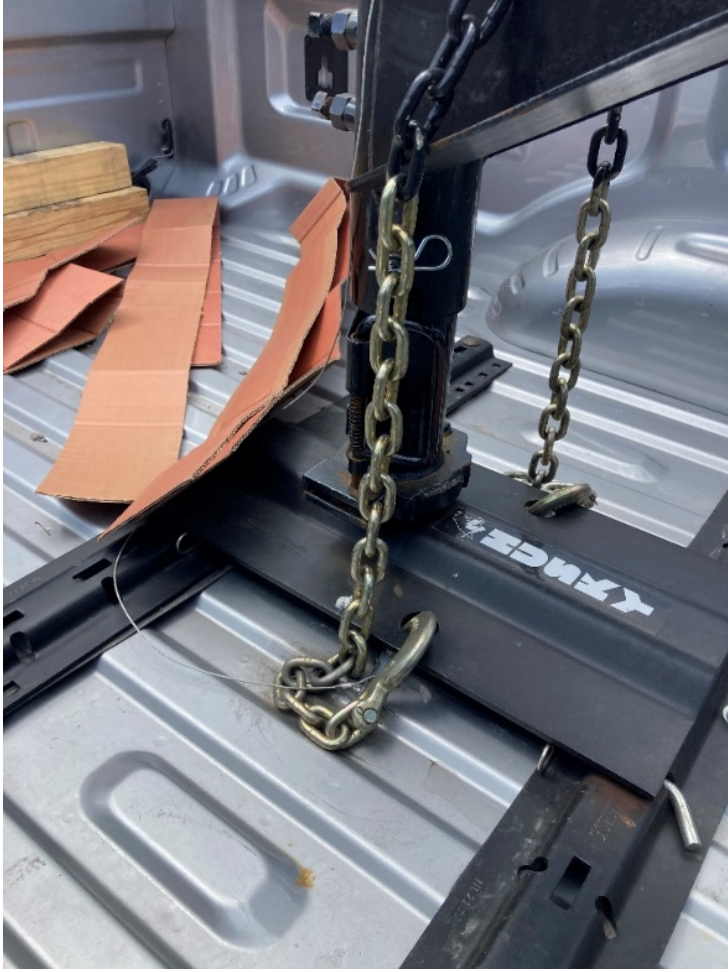
max inflation pressure. 5 of 10 adjacent wheel fasteners on a single wheel were loose. The trailer was placed OOS for the violations.



- 5/25, Inspector discovered a flat tire during an inspection at the Emerald Lake detail. The CMV was placed out of service and repaired on site. Additionally, the carrier was under suspension in VT. The driver was provided instructions on how to correct the suspension.



- 5/25, Inspector stopped a drive-by at the Dorset Detail. A Level 2 inspection was conducted. The trailer was placed out of service for an improper breakaway cable. It was attached to the chain and not the power unit. The driver repaired at the scene and was allowed to continue.





- 5/25, Inspector located an inoperable brake during a level 1 inspection at the Emerald Lake Detail. The clevis pin connecting the push rod to the slack adjuster was missing. The single defective brake did not meet the out of service criteria for this combination.



- 5/25, Cpl. inspected a 2-axle non-CDL interstate vehicle and found the driver had no medical certificate, a suspended (NY) operators' license and unsecured appliances. The truck was placed Out of Service for the unsecured cargo and the driver for operating a CMV with a suspended license.

NORTHWEST SECTOR:

Details:

- 5/23 Ferrisburgh, US Rte. 7 N, 3 Inspectors screened 62 vehicles. They completed 14 inspections which resulted in 11 vehicle and 8 driver violations. Two vehicles were placed out of service.
- 5/25 Williston Rest Area, I 89 N, 4 Inspectors screened 270 vehicles. They completed 19 inspections which resulted in 24 vehicle and 5 driver violations. One vehicle and one driver were placed out of service.

Crashes: None Reported

Notables:

- 5/23 Cpl. inspected a tractor trailer unit at the Rte. 7 Ferrisburgh detail. The inspection revealed a brake was inoperative on the steer axle of the truck tractor and multiple tires were defective on the combination. The truck tractor was placed out of service for the brake infraction and the carrier was ticketed.
- 5/25 Cpl. inspected an intrastate tractor trailer hauling hazardous materials at the Williston detail. The vehicle was placed out of service for transporting incompatible materials adjacent to each other. The hazardous materials were required to be separated/ segregated.

